

Winlink Express 1.5.23.0 - WB3ILX

WB3ILX Settings Message Attachments Move To: Saved Items Delete Open Session: Winmor Winlink Logs Help

No active session...

	Date/Time	Message ID	Size	Source	Sender	Recipient	Subject
	2019/08/24 17:04	DZE5WMMRSRIHD	1284	W3QA	W3QA	WB2QBP...	Call for action - Contact your ARRL Director

System Folders

- Inbox (0 unread)
- Read Items (0)
- Outbox (0)
- Sent Items (1)
- Saved Items (0)
- Deleted Items (0)
- Drafts (0)

Personal Folders

Global Folders

Contacts

- BRET / W4HBS
- DAN / W4DTP
- DAVE / K4BBH
- GA\_STATE\_FORECAST
- LEE / WB4QOJ
- RON / WB3ILX
- RUTH / WA4MDQ
- STAN / K4SHW
- WX\_SEVERE\_FORECAST
- WX4GMA
- WX4PCA

Message ID: DZE5WMMRSRIHD  
 Date: 2019/08/24 17:04  
 From: W3QA  
 To: WB2QBP; WB2SNN; WB2SVB; WB2U; WB2UKX; WB2UOB; WB2UTI; WB2YZX; WB2ZII; WB3AJH; WB3CKA; WB3CVN; WB3EME; WB3EMQ; WB3FTQ; WB3GCK; WB3GNO; WB3HAD; WB3IGW; WB3ILX  
 Source: W3QA  
 Downloaded-from: Telnet:cms.Winlink.org  
 Subject: Call for action - Contact your ARRL Director

To ALL US WINLINK USERS:  
 (Ignore the TO: header please, This is a mass message sent in small groups.)

Urgent action requested!

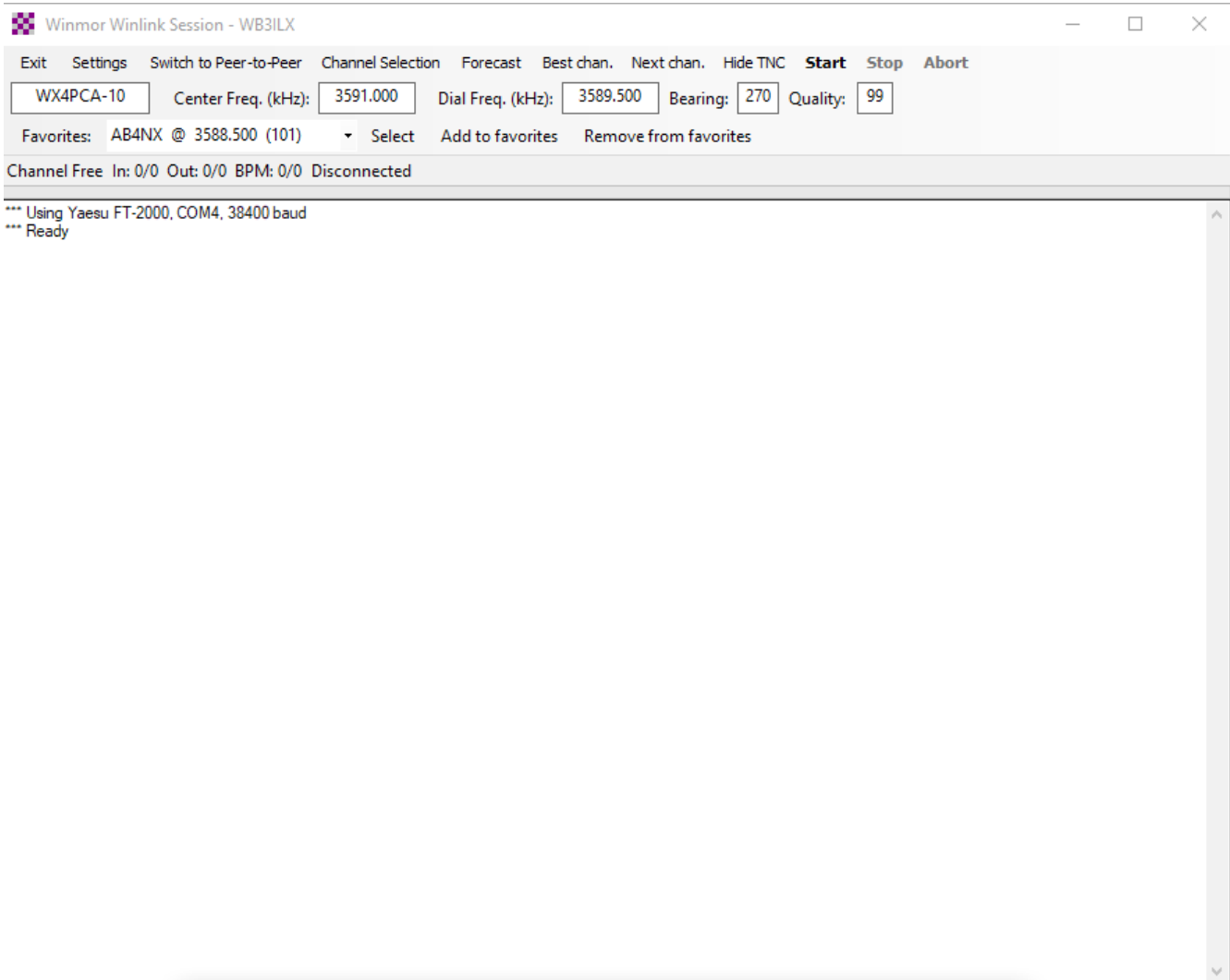
Please read the article at:  
[https://winlink.org/content/what\\_was\\_arrrl\\_thinking](https://winlink.org/content/what_was_arrrl_thinking)

The ARRL Directors have instructed their attorney to obtain FCC approval on an absurd change to Part 97 rules.

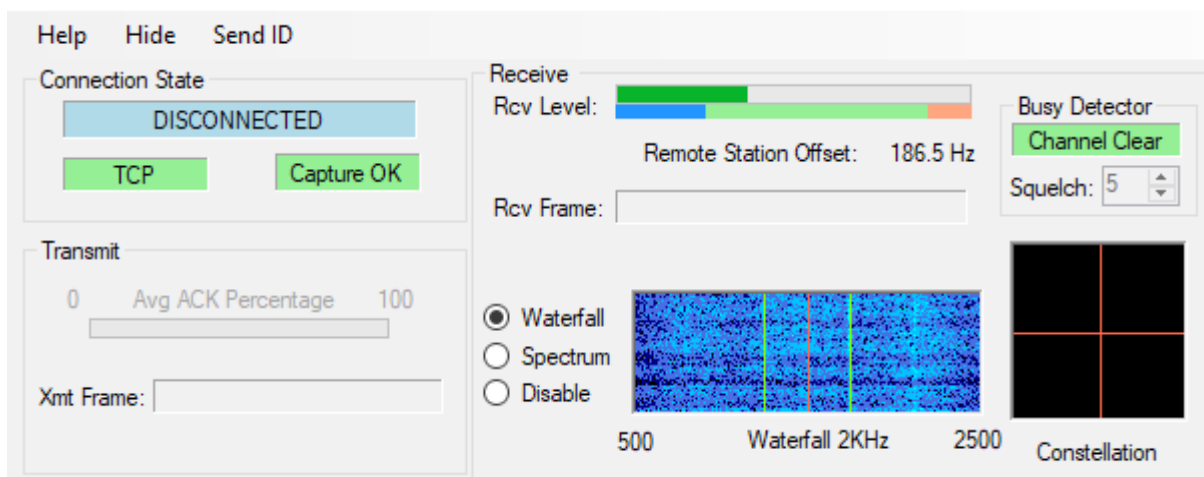
They want to require:

1) ALL digital stations operating with a bandwidth over 500 Hz to operate within the narrow automatic subbands defined by 97.221(b) REGARDLESS OF WHETHER THEY ARE AUTOMATIC OR NOT.

Start Winlink Express when the main screen comes up go to open session click on the down arrow in the open session window and select Winmor Winlink for the mode. Next click on open session and you should see the following windows open:



WINMOR Sound Card TNC Ver:1.5.13.0 Port:8500



In the top window click on settings and the WINMOR Setup window will open then setup your TNC or sound card then update it and in settings and set up your radio. If you do not have rig control then under radio select MANUAL.

Winmor Winlink Session - WB3ILX

Exit Settings Switch to Peer-to-Peer Channel Selection Forecast Best chan. Next chan. Hide TNC Start Stop Abort

WX WINMOR TNC Setup 3591.000 Dial Freq. (kHz): 3589.500 Bearing: 270 Quality: 99

Favor Radio Setup

Channel Transmit Level Test

DSP Speed Test

\*\*\* Using

\*\*\* Ready Best channel setup...

Select Add to favorites Remove from favorites

Disconnected

WINMOR Setup

Identify with Morse Code

WINMOR Capture Device: Line (2- USB AUDIO CODEC)-46

WINMOR Playback Device: Speakers (2- USB AUDIO CODEC)-02

Virtual TNC host address/name: 127.0.0.1

Virtual TNC Command Port: 8500 Data Port: 8501

Inbound Session Bandwidth (Hz): 500 Drive Level: 90

Update Cancel

Winmor Winlink Settings

Radio Selection

Select Radio Model Yaesu FT-2000 Antenna Selection Default

Icom Address 00 USB  USB Digital  FM  Use Internal Tuner

Radio Control Port

Serial Port to Use COM4 Baud 38400 Enable RTS  Enable DTR  TTL

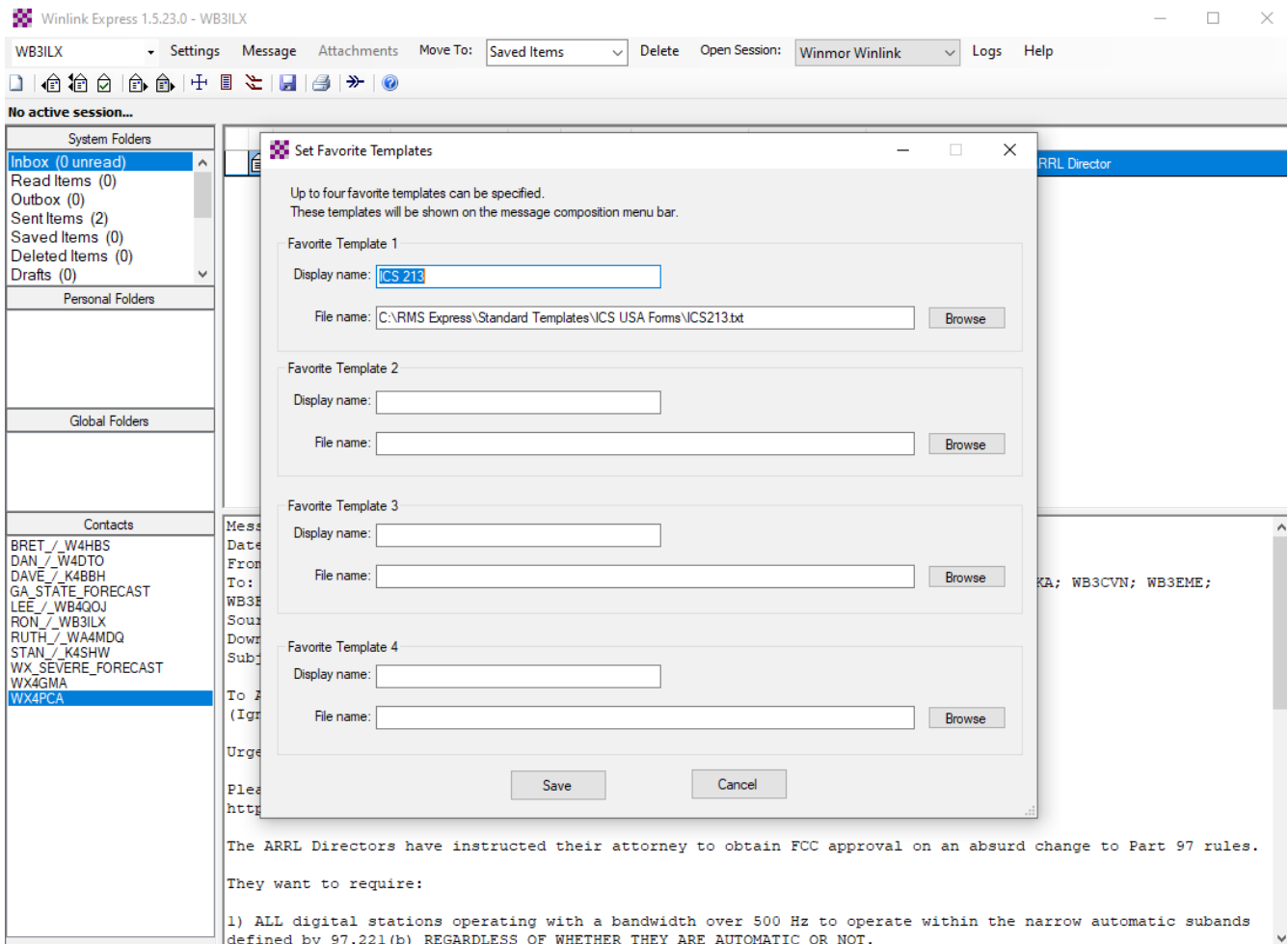
PTT Port (Optional)

Serial Port to Use External Baud 9600 Enable RTS  Enable DTR

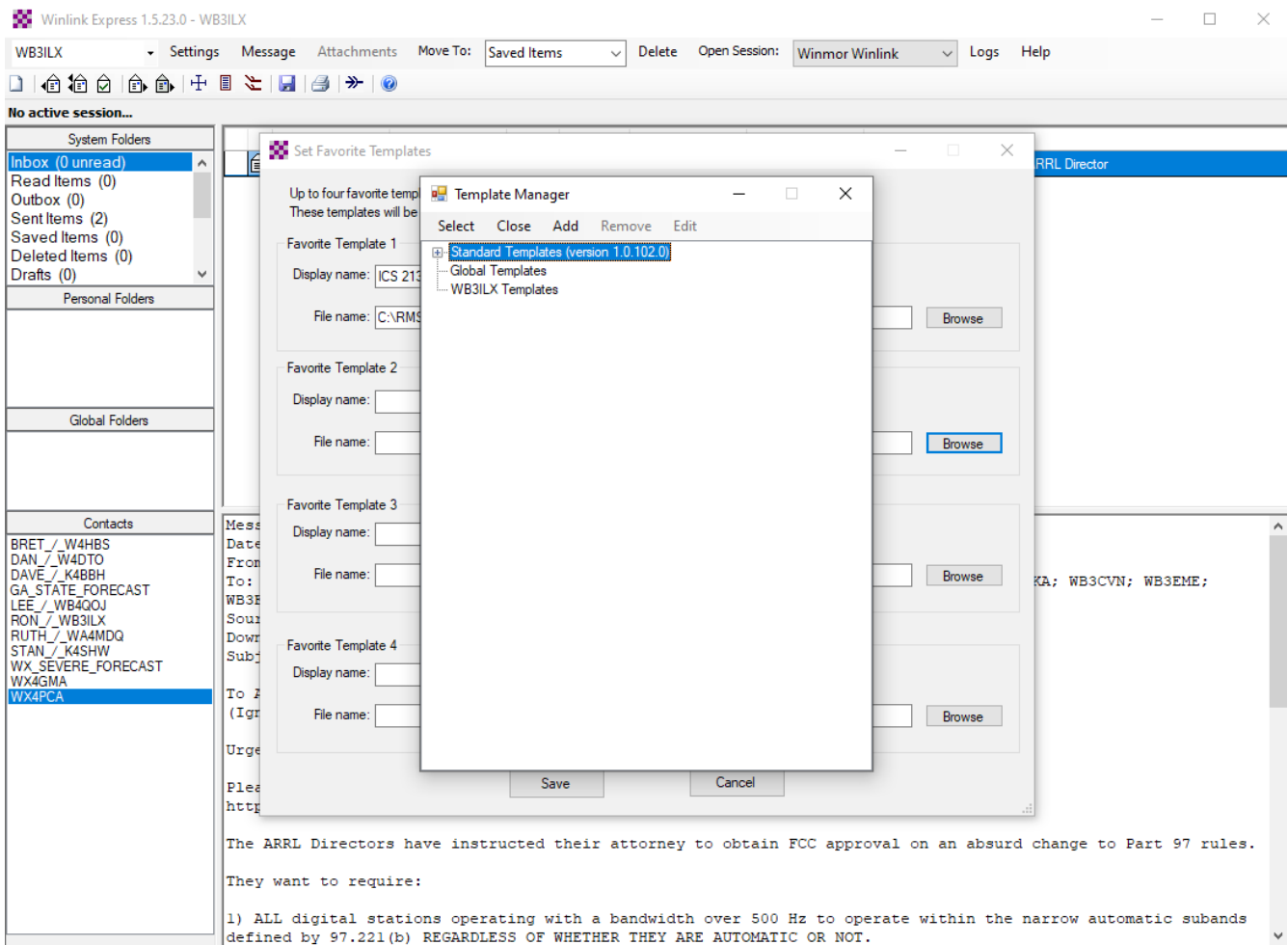
Update Close

Exit Select Update Table Via Internet Update Table Via Radio Forecast SFI All RMS

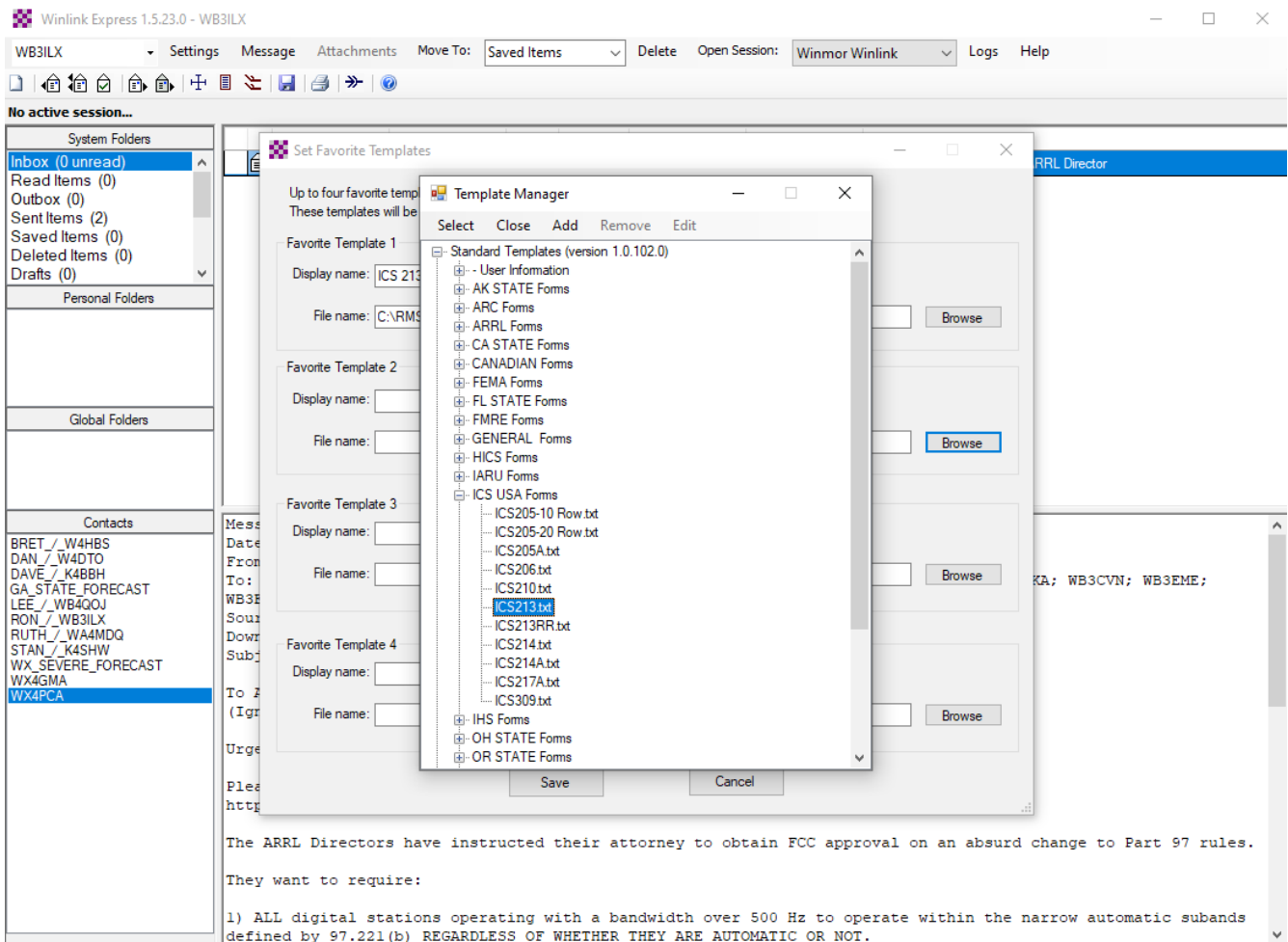
Callsign	Frequency (kHz)	Mode	Grid Square	Hours	Group	Distance (mi)	Bearing (Degrees)	Path Reliability Estimate	Path Quality Estimate
WX4PCA-10	3591.000	1600	EM73NU	00-23	PUBLIC	5	270	99	99
AB4NX	3588.500	1600	EM73WT	00-23	PUBLIC	38	094	99	99
AB4NX	7103.000	1600	EM73WT	00-23	PUBLIC	38	094	96	96
WB9FHP	7075.500	500	EM68SM	00-23	PUBLIC	336	344	74	53
K9BBS-10	7102.500	500	EM68SR	00-23	PUBLIC	349	345	75	52
WW4MSK	3594.500	1600	EM74UW	00-23	PUBLIC	80	021	75	50
WW4MSK	3592.500	1600	EM74UW	00-23	PUBLIC	80	021	75	50
AJ4FW	7103.700	1600	FM07BC	00-23	PUBLIC	355	049	74	50
W6IDS	7102.500	500	EM79NV	00-23	PUBLIC	418	359	76	50
W6IDS	7084.500	500	EM79NV	00-23	PUBLIC	418	359	76	50
WZ4P	3594.500	1600	EM74LU	00-23	PUBLIC	70	348	74	49
N4JGW	3597.000	1600	EM74LR	00-23	PUBLIC	62	347	73	49
K4FEM	3590.500	1600	EM74UV	00-23	PUBLIC	78	021	74	49
KC8YJJ	7102.500	1600	EN90PL	00-23	PUBLIC	510	025	72	47
WW4MSK	7104.500	1600	EM74UW	00-23	PUBLIC	80	021	62	46
WW4MSK	7103.500	1600	EM74UW	00-23	PUBLIC	80	021	62	46
KD7UHR	7107.000	1600	EM58BQ	00-23	PUBLIC	438	321	70	46
W9FE	7104.500	1600	EM59AA	00-23	PUBLIC	458	323	69	46
KK4NTE	7097.500	1600	EM74VV	00-23	PUBLIC	80	024	62	46
AK4SK	7102.700	1600	EM60VL	10-05	PUBLIC	247	200	68	46
WB5HUP	7104.000	1600	EM50PM	00-23	PUBLIC	324	226	67	45
AK4SK	7064.000	500	EM60VL	10-05	PUBLIC	247	200	64	45
K9EYZ-10	7102.500	1600	EM50PM	00-23	PUBLIC	324	226	67	45
WD4SEN	7101.500	1600	EM90CC	00-23	PUBLIC	313	145	66	44
K5LAM-10	7101.500	1600	EM52AF	00-23	PUBLIC	319	251	62	44
N3HYM-10	7102.500	1600	FM19FK	00-23	PUBLIC	557	044	65	44
N2LEE	7102.500	1600	FM18HX	00-23	PUBLIC	542	047	66	44
KX4Z	7103.500	1600	EL89RQ	00-23	PUBLIC	316	155	65	44
KI4WPI	10142.500	1600	EL96UF	00-23	PUBLIC	590	152	62	44
NF4RC	7102.500	1600	EL89RQ	00-23	PUBLIC	316	155	65	44
KB5LZK	7101.200	1600	EM34UT	00-23	PUBLIC	432	281	63	43
KB5OZE	7087.500	1600	EL49WU	00-23	PUBLIC	418	230	61	43
NX4AC	7089.000	500	EM81DD	00-23	PUBLIC	197	161	56	43
AD5EO	7103.000	1600	EM34QN	00-23	PUBLIC	450	278	60	42
KB5HCD	10145.200	1600	EL29FU	00-23	PUBLIC	688	249	58	42



On the main screen left mouse click on Message and select Set Favorite Templates. Then click on Browse and the following window will open. This is how your screen will look after you have completed the next few screens. If it looks like this then you have been successful in setting up this form. The last instruction will be to type in the ICS 213 for the Display name so you can do this when the screen opens before you set up the path statement for the ICS 213 form.



Left mouse click on the plus sign to open the Standard Templates. When the next window opens as shown in the next frame select ICS213.txt as the form left mouse click on ADD at the top of the window. This will fill in the path to the form.



In the Display name field just above the path statement line type in ICS 213 as this is the name that will appear for the template name when you want to send this form.