

WX4PCA Repeater System Rockmart, Georgia

Serving Paulding County and West Metro Atlanta

D-Star – D-Rats -Analog -Winlink -AX.25 Packet

Analog EchoLink Node #3026 Allstar Node #43287



WX4PCA C D-Star 2 meters 145.340 (-)
WD4PCA B D-Star 70 cm 440.575 (+)
WX4PCA Analog 70 cm 443.475 (+) 77hz
(70 cm analog linked 7x24 to 146.955 repeater)
WX4PCA – 3 Packet KA-Node 145.63 (AX.25)
WX4PCA-10 WinLnk 145.63 Packet - VARA FM
WX4PCA-10 VARA HF WIDE 3591.0 / 28.148 usb

PLD-ARES Ratreflector (Internet)

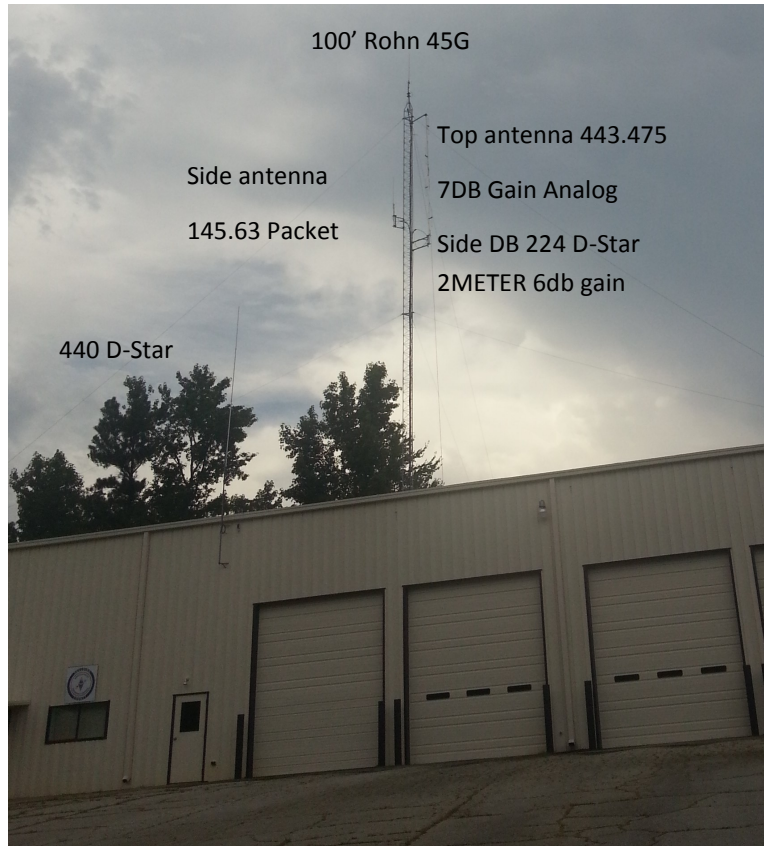
d-rats.pauldingares.com: 9000

(Backup Ratreflector wx.ozment.net : 9000)

WD4PCA D-RATS RF via 440.575 Repeater

www.pauldingares.com
PauldingARES@groups.io

WX Info trans. 30 mins on D-Rats during event



Fire Station 7 Home of WX4PCA Repeaters 100' Rohn 45-G

OUR MISSION

Paulding County Amateur Radio Emergency Service (ARES®) is an organized unit of trained, FCC-licensed volunteer Amateur Radio operators dedicated to providing back-up, auxiliary emergency communication support to the Paulding County Emergency Management Agency (EMA). Support is also provided to other local and State agencies including GEMA and Federal agencies including FEMA during disasters and other emergencies. Paulding County ARES also provides communication support for public service events, and we regularly participate in readiness exercises and drills.



THANKS TO ALL THAT MADE THIS PROJECT A SUCCESS FOR PAULDING COUNTY—WEST METRO ATLANTA AND BEYOND

EC Paulding ARES K4DMF System Technical Repeater Team - AEC KC4YCM Technical Design and Construction
AEC W4DTCO D-STAR Control – Implementation / AEC WB4QOJ Trustee and Technical © 2015 2021 Paulding County ARES

WX4PCA D-STAR SYSTEM Rockmart, Ga. 331 feet above average terrain.

2 Meters and 70 cm WX4PCA 2 meters on XLX043A 7x24 Also via Peanut App.

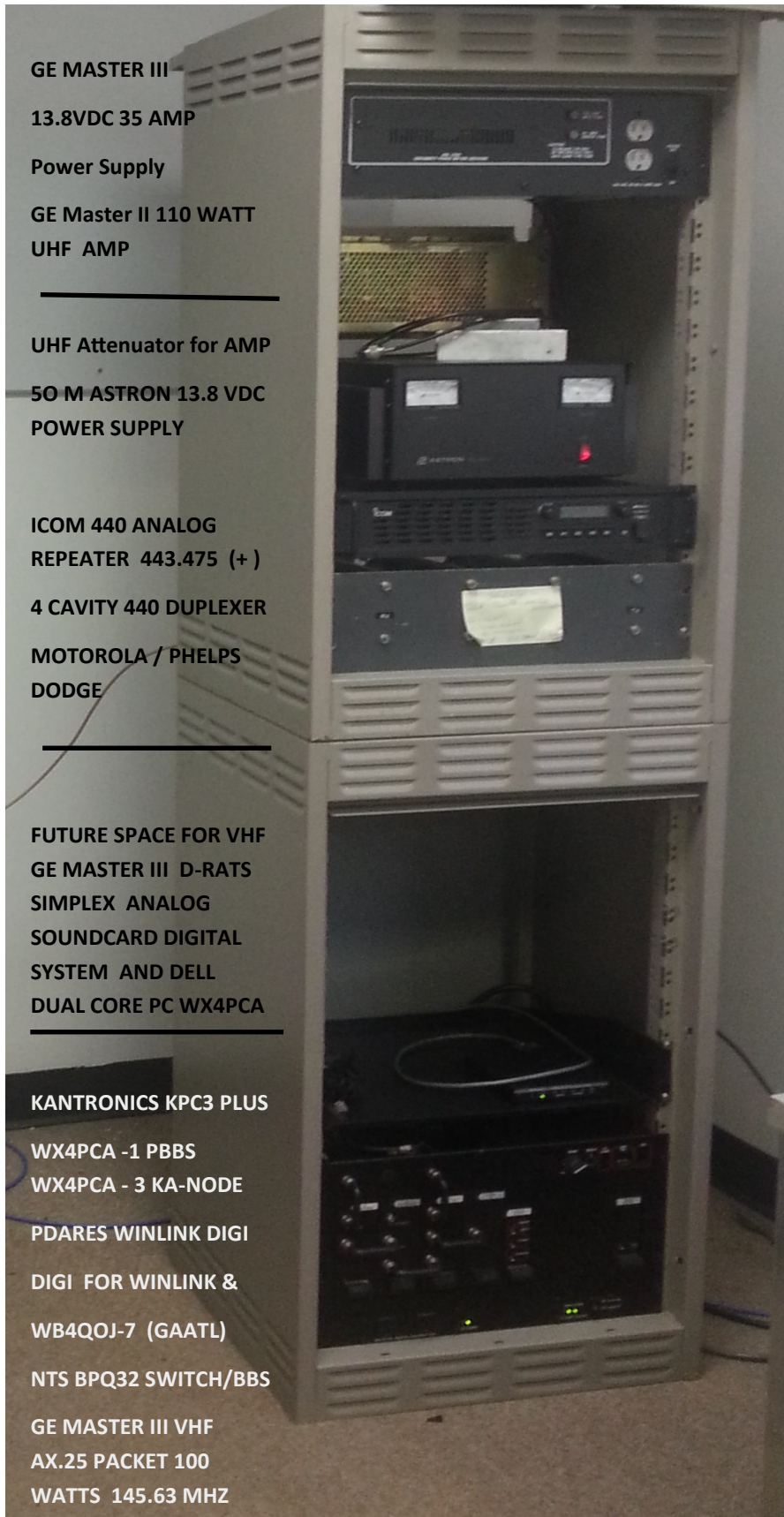
WD4PCA 70 cm Data XLX043A 7x24 “ D-Rats “ always accepted

“PAULDING COUNTY ARES WX4PCA REPEATER SYSTEM “

D-STAR / AX.25 PACKET / ANALOG / WINLINK



WX4PCA ANALOG SYSTEM Rockmart, Ga. 331 feet above average terrain.



**100 Foot Rohn 45-G Tower Photos from above top Antenna 331 Feet AAT Aerial photos KE4LEC
Looking West Toward Cedartown and Rome Georgia . Also, Piedmont Alabama**



Looking North Toward Cartersville and Calhoun, Georgia



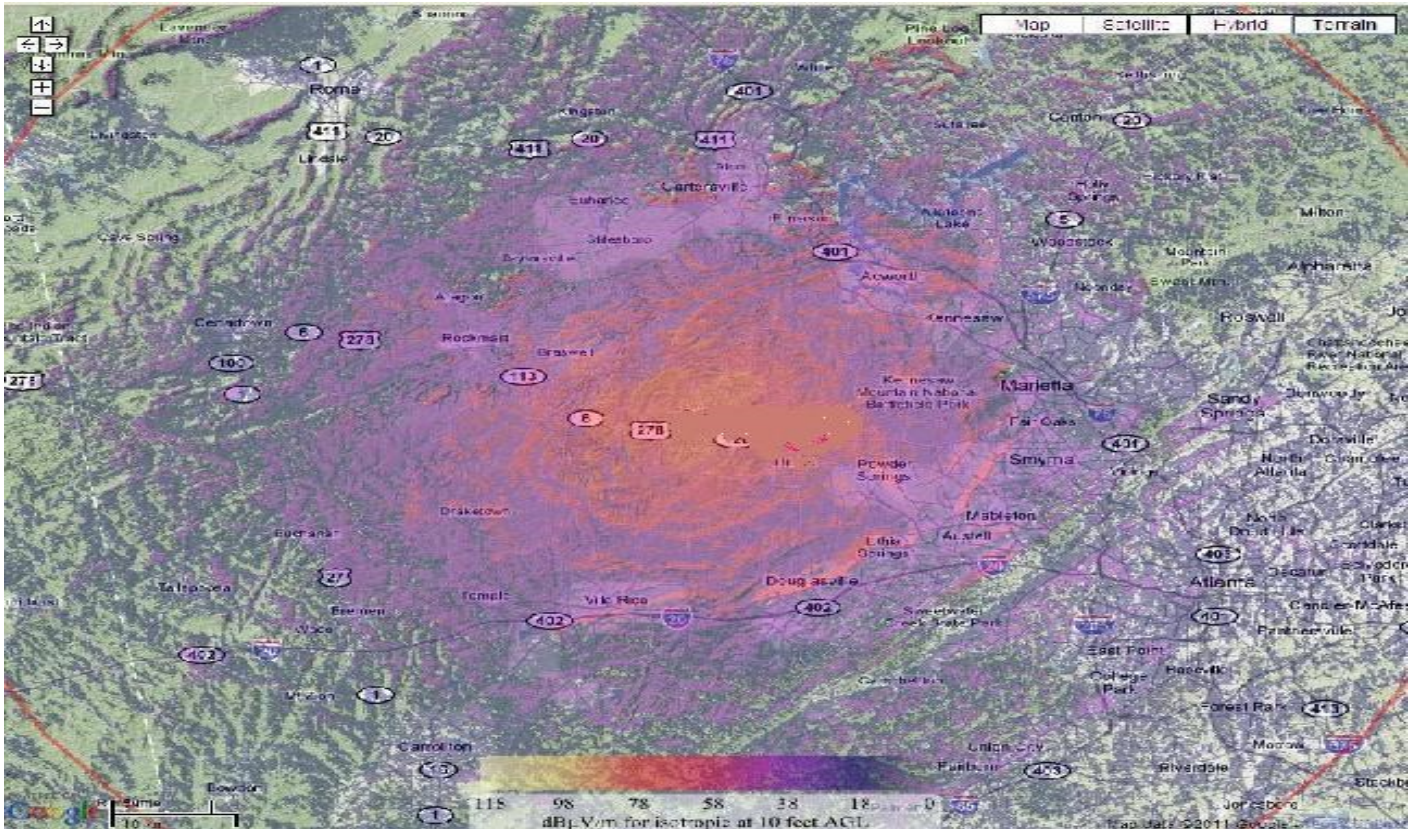
Looking East Toward Dallas, Hiram, Kennesaw and Marietta, Georgia



Looking South Toward Interstate 20 South Atlanta Stone Mountain, Georgia



RF Map for WX4PCA 2 Meter D-STAR Solid Mobile coverage from Piedmont, Alabama to Rome, Georgia to Calhoun, GeorgiaInterstate 75 North to Cherokee and Gordon County's ...East to Kennesaw and Marietta, Georgia Dallas & Hiram 2 meter D-Star 250 watts ERP 440 D-Star 266 watts ERP 440 Analog 250 watts ERP 2 meter Packet KA-Node 360 watts ERP



® ARES (Amateur Radio Emergency Service ®) Is a program of, and both logos are registered trademarks of The American Radio Relay League, Inc. arrrl.org WB4QOJ AEC Digital/PIO Paulding County ARES (doc rev 3.0a)